



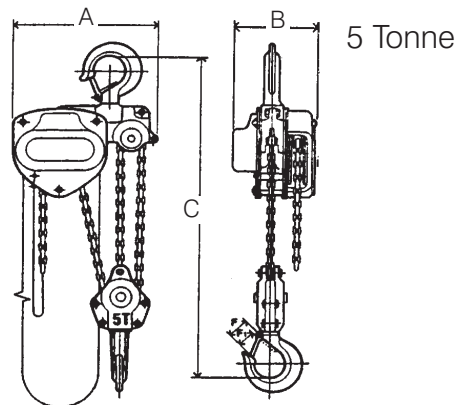
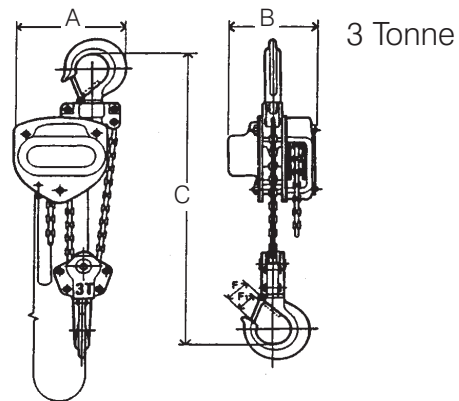
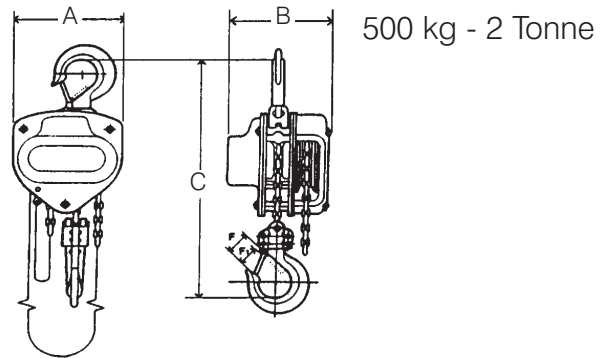
William Hackett

Material Handling Equipment



Tiger Manual Chain Hoist

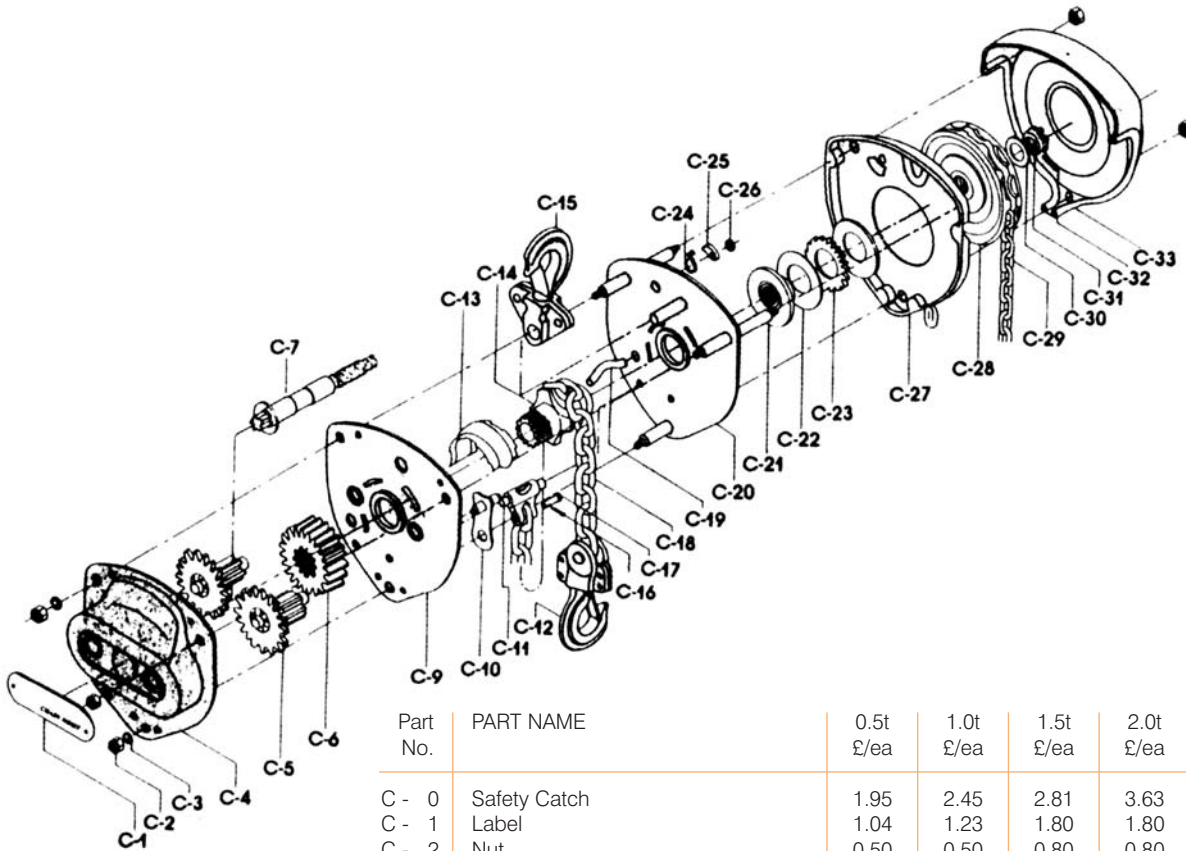
BS 3243 : 1990 CLASSIFICATION L3:M2. GR 100 LOAD CHAIN. 5:1 SAFETY FACTOR



PART Code	S.W.L.	Dimensions mm					Load Chain			PRICES £		
		A	B	C	D	E	Dia mm	No. of falls	Mass Kg 3 mtr	Unchained	3 mtr. H.O.L.	Extra per mtr
012.050	500 kg	130	156	305	30	26	6.3	1	10.8	66.00	90.31	8.72
012.100	1 t	150	156	340	33	28	6.3	1	12	75.00	99.31	8.72
012.150	1.5 t	180	166	385	38	34	7.1	1	16.3	125.00	150.60	9.15
012.200.L	2t	180	166	397	43	38	7.1	1	16.7	144.00	169.60	8.35
012.200	2 t	200	175	420	43	38	8.0	1	21	144.00	171.70	9.85
012.300	3 t	210	166	465	43	38	7.1	2	25	180.00	221.95	14.60
012.500	5 t	330	175	575	57	52	8.0	3	39	290.00	354.60	22.15

* Part Code 012.200.L Safety Factor 4:1

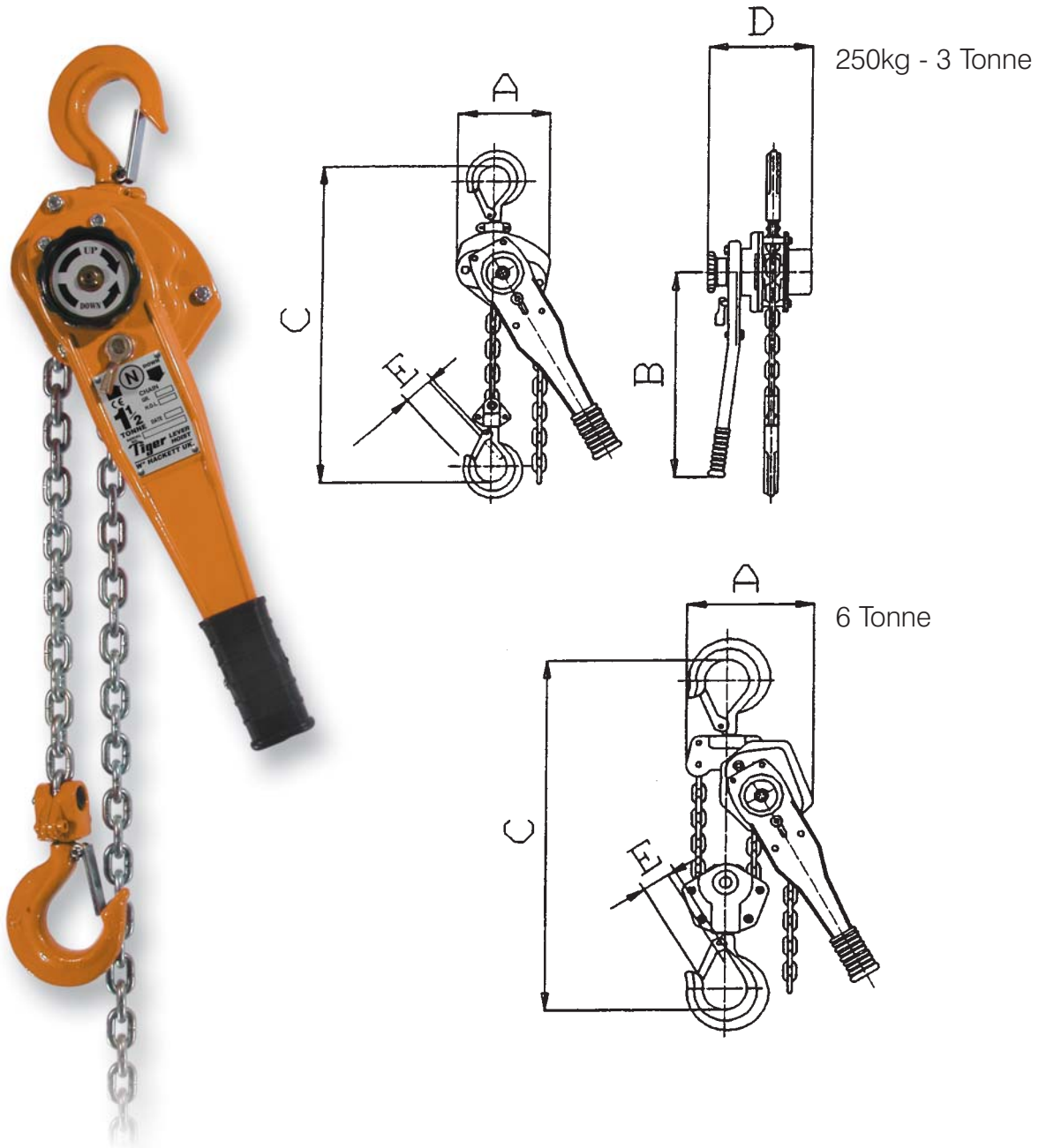
Tiger Chain Hoist Spare Parts



Part No.	PART NAME	0.5t £/ea	1.0t £/ea	1.5t £/ea	2.0t £/ea	3.0t £/ea	5.0t £/ea
C - 0	Safety Catch	1.95	2.45	2.81	3.63	3.90	4.40
C - 1	Label	1.04	1.23	1.80	1.80	1.80	1.80
C - 2	Nut	0.50	0.50	0.80	0.80	0.80	0.80
C - 3	Spring Washer	0.50	0.50	0.80	0.80	0.80	0.80
C - 4	Gear Cover	7.01	9.05	15.13	17.00	15.13	17.00
C - 5	Pinion (with pinion gear)	4.76	4.76	8.00	9.05	8.00	9.05
C - 6	Load Gear	8.50	10.21	16.90	18.00	16.90	18.00
C - 7	Pinion Shaft	6.10	6.10	8.10	8.30	8.10	8.30
C - 8	Pinion Shaft Washer	0.50	0.50	0.50	0.50	0.50	0.50
C - 9	Gear-Side Plate	5.57	5.57	13.30	15.10	13.30	15.10
C - 10	Stripper	1.80	1.80	2.20	2.20	2.20	2.20
C - 11	Load Chain Anchoring	1.80	1.80	2.20	2.50	2.20	2.50
C - 12	Bottom Hook Assembly	14.80	16.80	31.00	35.00	63.62	102.50
C - 13	Load Chain Guide	1.90	1.90	2.20	3.50	2.20	3.50
C - 14	Load Sheave	9.53	8.50	12.00	18.00	12.00	18.00
C - 15	Top Hook Assembly	12.10	14.11	20.14	25.86	34.95	59.32
C - 16	Cutter Pin	2.00	2.00	2.00	2.00	2.00	2.00
C - 17	Chain-End-Fixing Pin	2.00	2.00	2.80	2.70	2.50	2.70
C - 18	Load Chain per metre	5.20	5.20	6.40	7.20	6.40	7.20
C - 19	Load Chain Guide Pin	1.00	1.00	1.40	2.00	1.40	2.00
C - 20	Wheel-Side Plate Assembly	7.00	8.00	15.00	16.00	15.00	16.00
C - 21	Disc Hub	3.72	3.72	6.90	6.90	6.90	6.90
C - 22	Friction Disc	3.00	3.00	3.75	3.75	3.75	3.75
C - 23	Ratchet Gear	3.59	3.59	4.20	6.20	6.20	6.20
C - 24	Pawl Spring	1.56	1.70	2.27	2.27	2.27	2.27
C - 25	Pawl	1.56	1.70	2.27	2.27	2.27	2.27
C - 26	Snap Ring for Pawl Pin	1.56	1.70	2.27	2.27	2.27	2.27
C - 27	Ratchet Gear Cover	2.15	3.36	7.45	8.55	7.45	8.55
C - 28	Handwheel	5.98	7.59	13.98	18.30	16.18	18.30
C - 29	Hand Chain (5mm) per metre	1.81	1.81	1.81	1.81	1.81	1.81
C - 30	Washer for Pinion Shaft Nut	0.40	0.40	0.40	0.40	0.40	0.40
C - 31	Check Nut	0.70	0.70	0.70	0.70	0.70	0.70
C - 32	Cutter Pin for Check Nut	0.40	0.40	0.40	0.40	0.40	0.40
C - 33	Handwheel Cover	4.84	5.69	9.78	12.51	9.78	12.51
C - 34	Nut / Bolt for Bottom Hook	2.09	2.09	2.09	2.09	2.09	2.09
C - 35	Nut / Bolt for Top Hook	2.97	2.97	3.30	3.96	3.30	3.96

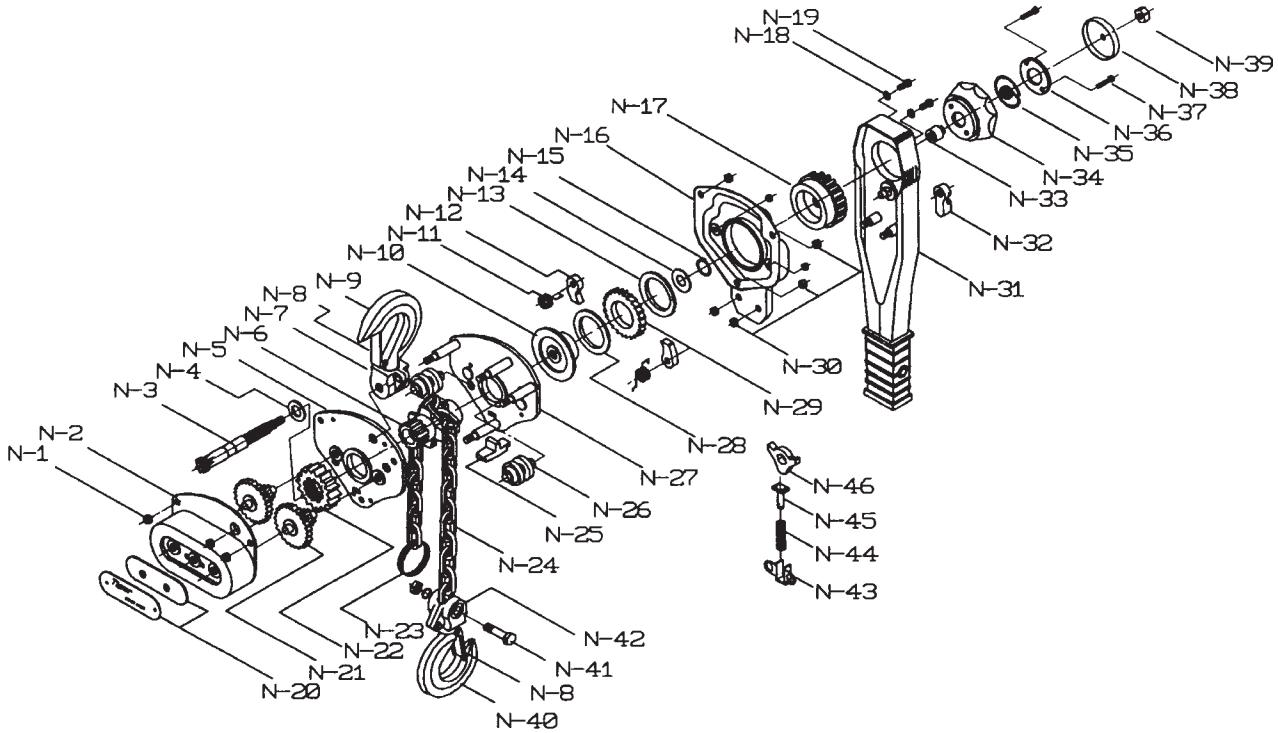
Tiger Lever Hoist

BS 4898. GR 100 LOAD CHAIN. 5:1 SAFETY FACTOR



Part code	S.W.L.	Dimensions mm					Mass kg	Load Chain		Price £	
		A	B	C	D	E		Dia mm	Falls	1.5 mtr	Extra per mtr
013.075	750kg	128	240	275	158	26	7.2	6.3	1	120.00	5.02
013.150	1.5 tonne	154	360	320	172	34	10.2	7.1	1	156.00	5.45
013.300	3 tonne	182	360	400	195	38	18	10	1	235.00	10.34
013.600	6 tonne	242	360	570	195	52	28	10	2	370.00	20.68

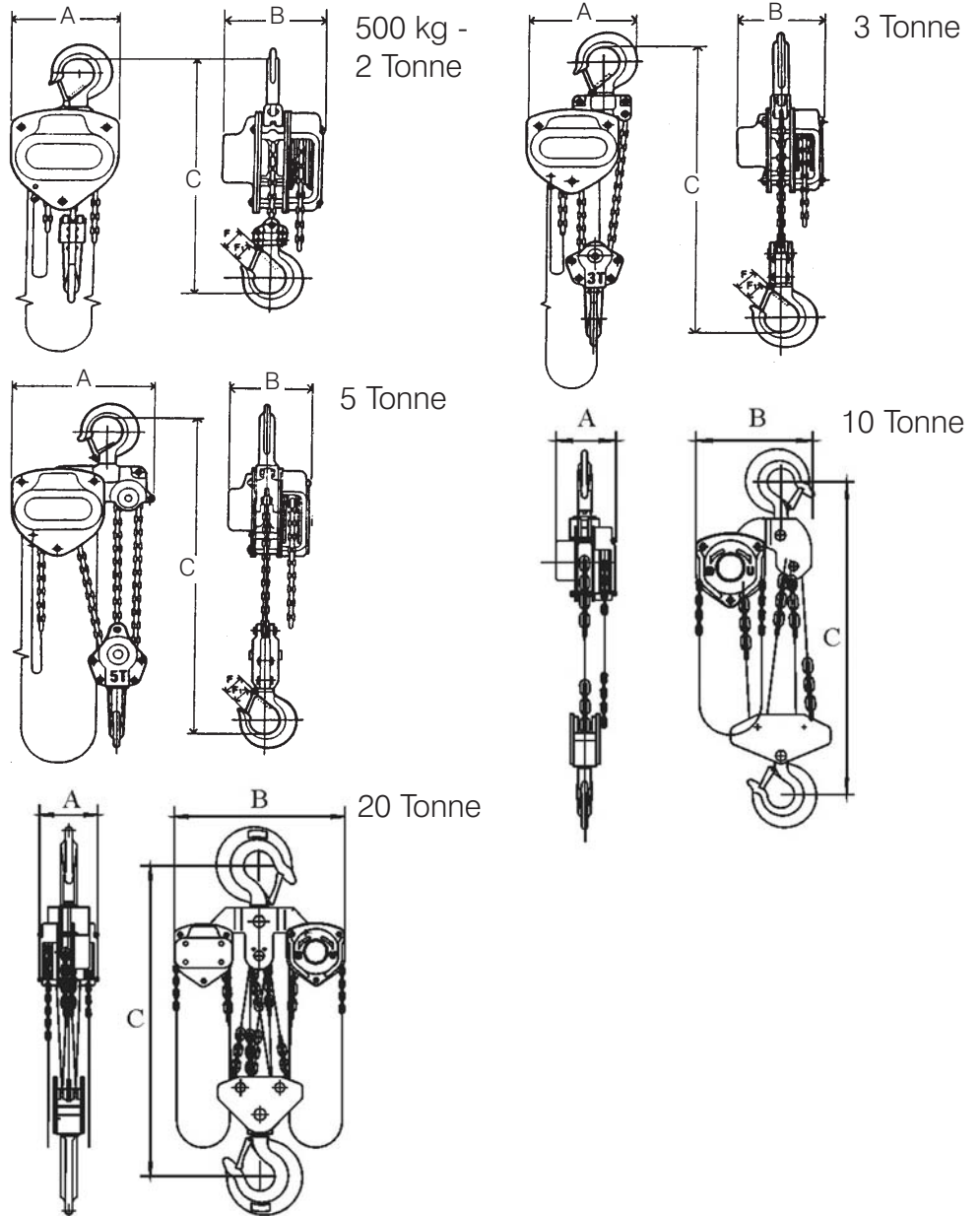
Tiger Lever Hoist Spares



Part No.	PART NAME	0.75t £/ea	1.5t £/ea	3.0t £/ea	6.0t £/ea	Part No.	PART NAME	0.75t £/ea	1.5t £/ea	3.0t £/ea	6.0t £/ea
N - 1	Nut for Gear Cover	0.40	0.40	0.50	0.50	N - 26	Load Chain Guide	2.90	3.40	5.00	5.00
N - 2	Gear Cover	8.31	10.40	16.40	16.40	N - 27	Wheel-side Plate Assembly	14.00	16.00	24.00	24.00
N - 3	Pinion Shaft	10.90	11.80	16.00	16.00	N - 28	1st Brake Disc	2.70	2.70	3.20	3.20
N - 4	Pinion Shaft Washer	0.60	0.60	0.70	0.70	N - 29	Ratchet Gear	3.90	3.90	5.00	5.00
N - 5	Gear-side Plate	7.70	10.01	16.00	16.00	N - 30	Nut for Handle Cover	0.40	0.40	0.60	0.60
N - 6	Load Sheave	9.90	12.00	21.34	21.34	N - 31	Handle Assembly	19.00	25.00	25.00	25.00
N - 8	Safety Latch	1.16	1.43	1.50	1.60	N - 32	Change Lever	1.70	1.70	1.70	1.70
N - 9	Top Hook Assembly	10.50	14.80	48.90	107.00	N - 33	Retaining Spring Base	1.50	1.50	1.50	1.50
N - 10	Disc Hub	7.04	7.04	8.69	8.69	N - 34	Grip Ring	5.00	6.00	7.00	7.00
N - 11	Pawl Spring	1.65	1.98	2.42	2.42	N - 35	Retaining Spring	1.00	1.20	1.20	1.20
N - 12	Brake Pawl	0.40	0.50	0.60	0.60	N - 36	Fixing Plate	0.90	0.90	0.90	0.90
N - 13	2nd Brake Disc	2.53	2.53	3.20	3.20	N - 37	Screw for Fixing Plate	0.50	0.50	0.50	0.50
N - 14	Spring Disc	0.50	0.50	0.50	0.50	N - 38	Grip Ring Cover	1.60	1.60	1.60	1.60
N - 15	Snap Ring	0.20	0.20	0.20	0.20	N - 39	Pinion Nut	0.70	0.70	0.70	0.70
N - 16	Brake Cover with Handle Cover	10.40	11.77	14.30	14.30	N - 40	Bottom Hook Assembly	11.00	15.00	47.55	106.00
N - 17	Change Gear	7.20	10.62	13.60	13.60	N - 41	Bottom Hook Pin	0.60	0.90	2.00	2.00
N - 18	Spring Washer	0.40	0.40	0.50	0.50	N - 43	Spring Stand	1.20	1.20	1.20	1.20
N - 19	Screw for Handle	0.30	0.30	0.40	0.40	N - 44	Pushing Up Spring	0.90	0.90	0.90	0.90
N - 20	Label	0.60	0.88	0.88	0.88	N - 45	Pushing Up Pin	0.90	0.90	0.90	0.90
N - 21	Pinion Gear	5.94	8.53	15.40	15.40	N - 46	Change Pawl	1.70	2.20	2.20	2.20
N - 22	Load Gear	8.03	11.10	19.25	19.25						
N - 23	End	1.65	1.65	1.65	1.65						
N - 25	Chain Stripper	0.55	0.60	0.77	0.77						

Hackett Gr. 80 Chain Block

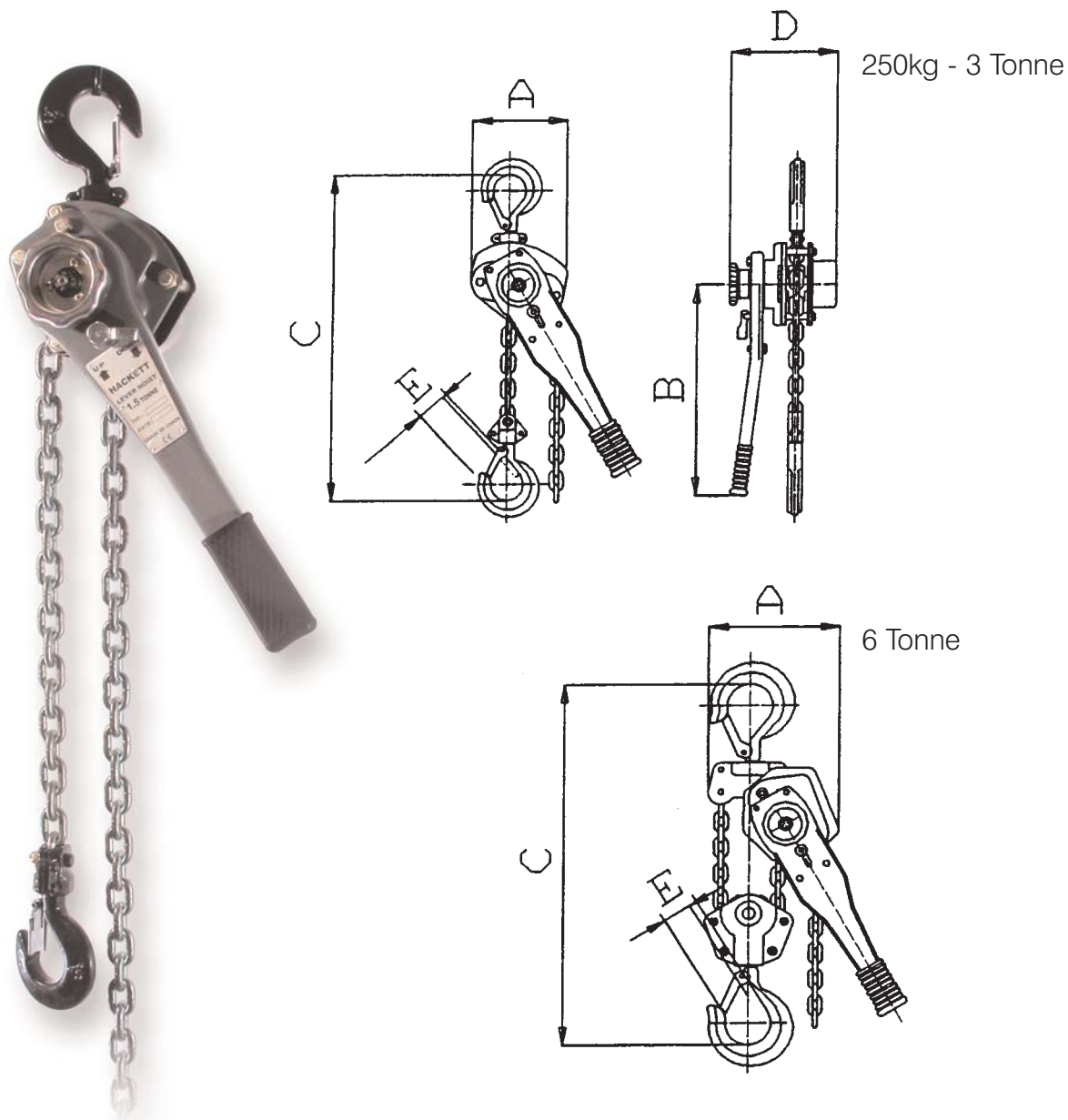
BS 3243 : 1990 GR 80 LOAD CHAIN. 4:1 SAFETY FACTOR



Part code	S.W.L.	Dimensions mm				Load Chain		Mass Kg 3 mtr	Price £		
		A	B	C	D	Size mm	Falls		Unchained	3 mtr	Extra per mtr
002.025	250kg	98	102	220	25	4	1	5	42.00	69.00	9.00
002.050	500kg	131	127	270	30	6	1	10	47.00	69.90	8.25
002.100	1t	140	158	317	34	6	1	12	54.00	76.90	8.25
002.150	1.5t	161	187	399	38	8	1	18.5	70.00	97.70	9.85
002.200	2t	161	187	414	41	8	1	20	81.63	109.33	9.85
002.300	3t	161	210	465	48	8	2	29	107.50	153.65	16.00
002.500	5t	186	253	636	52	10	2	45.5	156.67	227.96	24.38
002/1000	10t	207	398	798	64	10	4	83	354.00	490.00	45.00
002/2000	20t	215	650	890	85	10	8	193	583.33	870.00	95.00

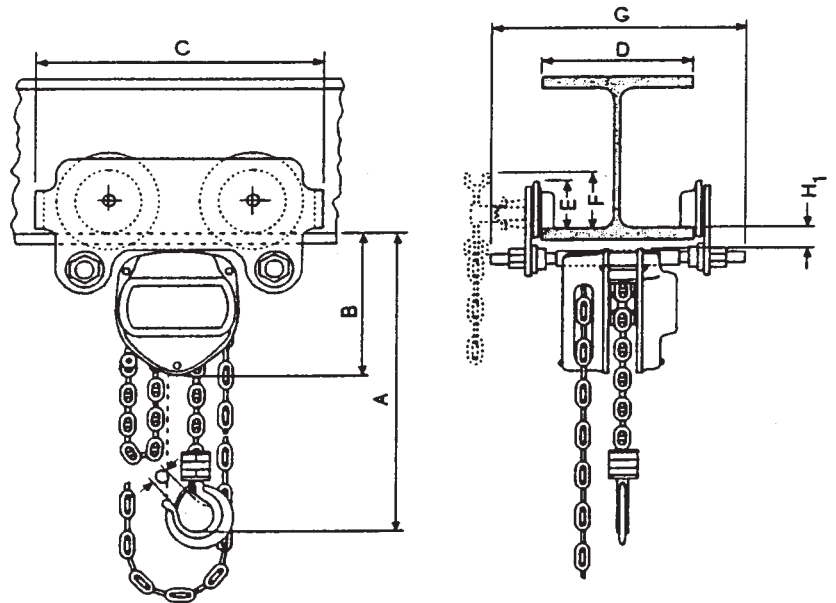
Hackett Gr. 80 Lever Hoist

BS 4898. GR 80 LOAD CHAIN. 4:1 SAFETY FACTOR



Part code	S.W.L.	Dimensions mm					Load Chain		Mass Kg 1.5 mtr	Price £	
		A	B	C	D	E	Size mm	Falls		1.5 mtr	Extra per mtr
003.025	250Kg	92	230	85	160	25	4	1	1.8	65.00	4.61
003.050	500Kg	105	260	80	300	30	5	1	4	74.00	3.98
003.075	750Kg	148	325	136	280	30	6	1	7	90.00	4.55
003.150	1.5t	172	380	160	410	36	8	1	11	108.00	6.15
003.300	3t	200	480	180	410	40	10	1	21	160.00	10.34
003.600	6t	200	620	235	410	50	10	2	31	240.00	20.68
003.900	9t	200	700	320	410	58	10	3	46	550.00	31.02

Combined Chain Block & Trolley



Push Travel

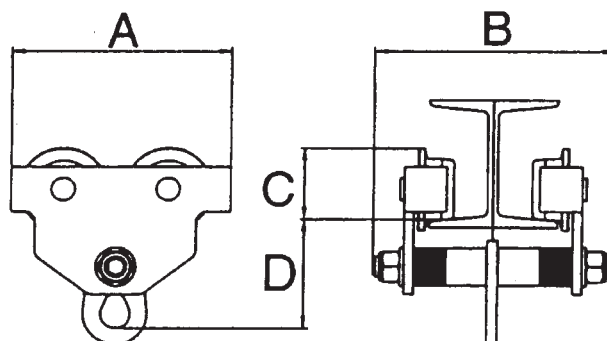
Part Code	S.W.L.	Dimensions							Price 3mtr	extra mtr	
		A	B	C	D	E	F	G			H
016.050	500kg	255	157	260	50 - 180	72	-	280	24	126.72	8.31
016.100	1t	290	178	310	58 - 180	72	-	290	24	143.55	8.31
016.200	2t	375	180	350	58 - 180	96	-	305	24	194.54	9.85
016.300	3t	465	225	451	74 - 180	131	-	320	32	300.18	16.00
016.500	5t	560	263	525	98 - 180	142	-	364	32	431.92	24.38

Geared

Part Code	S.W.L.	Dimensions							Price 3mtr	extra mtr	
		A	B	C	D	E	F	G			H
016.050.G	500kg	255	157	260	50 - 180	77	92	400	24	154.75	12.01
016.100.G	1t	290	178	310	58 - 180	77	92	410	24	168.37	12.01
016.200.G	2t	375	180	350	58 - 180	98	92	425	24	226.47	13.55
016.300.G	3t	465	225	451	74 - 180	132	108	440	32	337.84	19.70
016.500.G	5t	560	263	525	98 - 180	148	150	484	32	499.74	28.08

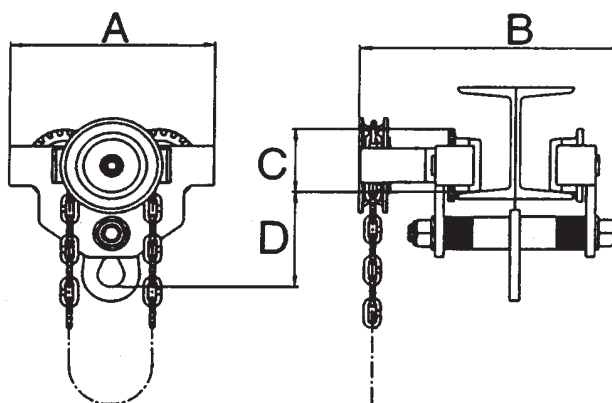
Beam Trolleys

Push Travel Trolley



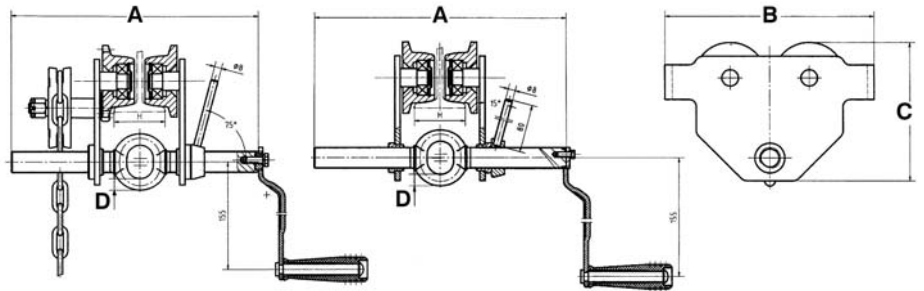
Part Code	S.W.L.	Dimensions mm				Mass kg	Range mm	Price £
		A	B	C	D			
004.050	500 kg	212	230	86	113	7	75 - 200	42.40
004.100	1 tonne	255	254	104	128	12	75 - 200	50.88
004.200	2 tonne	302	294	126	152	22	75 - 250	82.68
004.300	3 tonne	344	344	152	186	30	100 - 300	144.16
004.500	5 tonne	378	360	174	219	55	100 - 300	224.00

Geared Trolleys



Part Code	S.W.L.	Dimensions mm				Mass kg	Range mm	Price £	Extra per mtr £
		A	B	C	D				
005.050	500 kg	212	308	86	113	14	75 - 200	90.00	3.70
005.100	1 t	255	328	104	128	19	75 - 200	110.00	3.70
005.200	2 t	302	362	126	152	29	75 - 250	145.00	3.70
005.300	3 t	344	428	152	186	40	100 - 300	226.00	3.70
005.500	5 t	378	434	174	219	65	100 - 300	332.12	3.70
005.1003	10 t	455	488	215	275	103	100 - 300	450.00	3.70
005.2003	20 t	650	525	305	315	265	100 - 300	850.00	3.70

Adjustable Beam Trolley



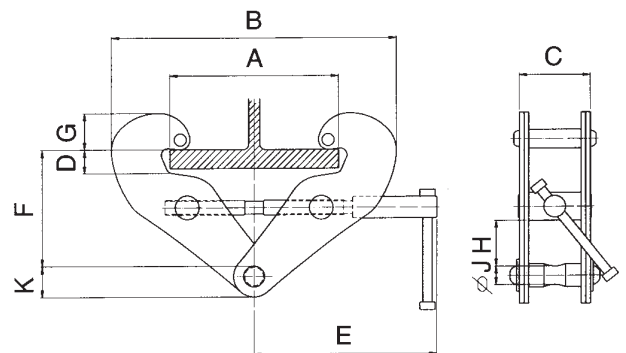
Push Travel

Part Code	S.W.L.	Dimensions mm				Mass Kgs	Standard Min mm	Range Max mm	Price (£)
		A	B	C	D				
006.050	500 kg	285	198	158	12.5	5	50	198	52.00
006.100	1 t	285	238	183	17	9	58	190	56.00
006.200	2 t	300	277	208	20	14	66	190	85.00
006.300	3 t	321	324	249	26	24	74	190	135.00
006.500	5 t	354	373	292	28	40	90	210	225.00

Geared

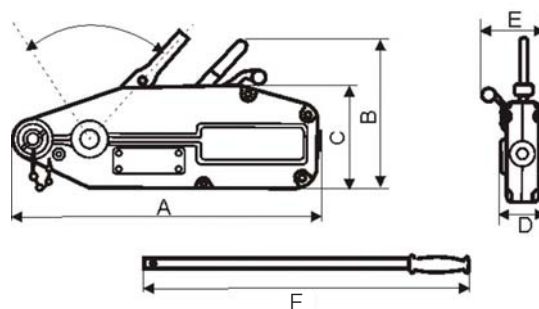
Part Code	S.W.L.	Dimensions mm				Mass Kg	Standard Min mm	Range Max mm	Price £	Extra per Mtr
		A	B	C	D					
006.050.G	500 kg	285	198	158	12.5	9	50	198	68.50	3.70
006.100.G	1 t	285	238	183	17	13	58	190	87.50	3.70
006.200.G	2 t	300	277	208	20	19	66	190	112.00	3.70
006.300.G	3 t	321	324	249	26	28	74	190	165.00	3.70
006.500.G	5 t	354	373	292	28	45	90	210	250.00	3.70

Beam Clamp



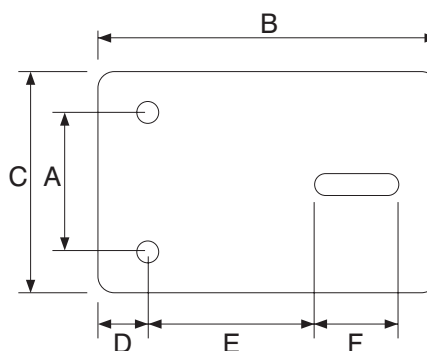
Part Code	S.W.L. (t)	Dimensions mm				Mass Kgs	Price (£)
		A	B	C	D		
007.100	1	75 - 220	182 - 328	64	26	190	102 - 155
007.200	2	75 - 220	182 - 328	74	26	190	102 - 155
007.300	3	75 - 320	214 - 460	103	35	240	140 - 225
007.500	5	75 - 320	214 - 460	110	35	240	140 - 225
007.1000	10	80 - 350	250 - 520	120	40	280	160 - 230

Hackett Wire Rope Pulling Hoist C/W 20 mtr rope



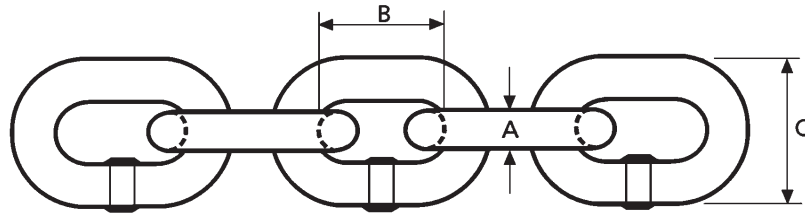
Part Code	S.W.L.	Dimensions mm					Mass Kg W/O Wire	Wire Rope Dia mm	Price (£)
		A	B	C	D	E			
009.080	0.8t	426	235	168	60	64	6	8.3	153.70
009.160	1.6t	545	280	190	72	97	11	11	206.70
009.320	3.2t	660	325	230	91	116	22	16	328.60

Hand Winch



Part Code	W.L.L. lbs	Dimensions mm						Rope Dia mm	Rope cap mtr	Mass Kg	Price W/O Wire £
		A	B	C	D	E	F				
011.120	1200	40	138	89	12	74	41	5	23	3.3	55.00
011.180	1800	70	193	107	29	110	35	7	24	8	85.00
011.260	2600	77	240	127	29	110	45	8	18	10.3	110.00

Calibrated Hoist Chains



Loadchain for use with Manual, Electrical and Air Hoists

Loadchain for Manual Air Hoists

Part Code	Dimensions mm			Grade	Price £
	A	B	C		
AT1.040.5	4	12	13.6	80	4.61
AT1.050.5	5	15	17	80	3.98
AT1.060.5	6	18	20.4	100	4.55
AT1.063.5	6.3	19.05	21	100	5.02
AT1.071.5	7.1	21.05	23.5	100	5.45
AT1.080.5	8	24	26.6	100	6.15
AV1.090.5	9	27	29.9	100	8.31
AV1.100.5	10	30	33.8	100	10.34
AV1.110.5	11.2	34.1	37.6	100	12.45

Loadchain for Electrical Hoists

AT1.056.C	5.6	17	20	80	6.10
AT1.071.C	7.1	21	25	80	7.75
AT1.100.C	10	30	35	80	12.80
AT1.110.C	11.2	34	39	80	14.00

Handchain for Manual Chain Hoists

CT6.050.25	5	25	18	30	1.85
------------	---	----	----	----	------

Alternative sizes available upon application

Chain Block and Lever Hoist Loadchain compatibility chart

Chain size mm	Tiger	Hackett	Morris	Elephant	Yale	Kito	Nitchi	Tractel	Pfaff	Vital	G. Taylor
4 x 12		#			#(AL)			#		#	
5 x 15		#	#(190)	#(S100)		#(M3CB)	#	#		#	#
5.6 x 17				#(C21)	#(PT)	#(L4LB)				#	
6 x 18		#			#(VS)			#			#
6.3 x 19.05	#		#(190)	#(S100)	#(AL)	#(L4LB)	#		#	#	
7.1 x 21.05	#			#(S100)	#(AL)	#(L4LB)	#	#	#	#	#
8 x 24	#	#			#(VS)	#(M3CB)		#			#
9 x 27				#(S100)	#(D85)	#(L4LB)	#		#	#	
10 x 30	#	#	#(190)		#(VS)			#			#