



Mod. CTP 2 - 1 199  
Tragfähigkeit S.W.L. kg  
Ser. No. 3349  
Flanschbreite Flange Range (mm)  
A B  
2000kg 75 - 200 200 - 300  
3000kg 75 - 200 200 - 320  
Yale  
Yale Industrial Products GmbH  
D - 42549 Solbert, Germany

Mod. HT 2-A  
Tragfähigkeit S.W.L. kg  
Ser. No. 1111  
Flanschbreite Flange Range (mm)  
2000 75-200 mm  
3000 75-200 mm  
4000 75-200 mm  
5000 75-200 mm  
6000 75-200 mm  
Yale  
Yale Industrial Products GmbH  
D - 42549 Solbert, Germany



### Trolleys and beam clamps

Yale trolleys and beam clamps can be supplied in many different designs and are used to support and mount hoisting equipment for fixed or traversing applications.

The threaded spindle principle makes for **quick and easy attachment** without the need to fit spacer washers. Yale trolleys and beam clamps have a **min. fracture security of 5:1** in accordance with the UVV (German Accident Prevention Act) and machinery directives.

They are tested with overload and supplied with a test certificate and an operating instructions manual which contains an EC declaration of conformity.

## Manual trolleys HTP/G



### Push type model HTP

Capacities 500 - 5.000 kg

### Geared type model HTG

Capacities 500 - 20.000 kg

The trolley enables the exact positioning or easy traversing of large loads with either manual or powered hoisting equipment. It has excellent rolling features due to machined steel wheels mounted on prelubricated, encapsulated ball bearings. Adjustable to fit a wide range of beam widths and profiles (e.g. INP, IPE and IPB). The trolley wheels are designed for a max. beam profile incline of 14%. Adjustments are made by rotating the clevis load bar which also ensures the centred positioning of the hoist in the clevis - no creeping to the left or the right. Anti-tilt and wheel fracture support devices according to DIN 15018 and the machinery directives are standard.

#### Optional

- Buffers can be fitted.
- Locking device to secure the trolley in position on the beam (park position e.g. on ships).
- Rust and acid resistant hand chains.

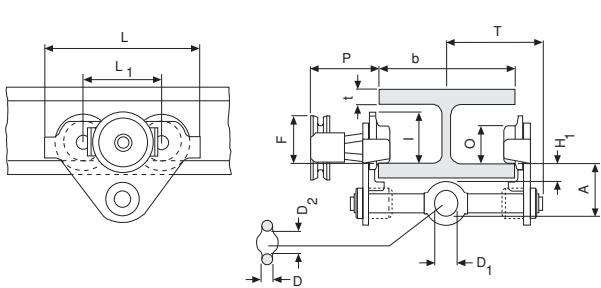
#### Technical Data

Model	Capacity kg	Size	Beam flange width b mm	Max. flange thickness t mm	Min. radius curve m	Effort at WLL daN	Net weight in kg			
							HTP	HTG*	with locking device HTP	HTG*
HTP/G	500	A	50 - 220	25	0,90	3	8,0	9,7	14,5	16,2
		B	160 - 300	40			10,6	12,6	17,1	19,1
HTP/G	1000	A	50 - 220	25	0,90	6	9,0	11,2	17,0	19,2
		B	160 - 300	40			12,0	14,1	20,0	22,1
HTP/G	2000	A	66 - 220	25	1,15	7	16,0	18,0	24,0	26,0
		B	160 - 300	40			19,3	21,3	27,3	29,3
HTP/G	3000	A	74 - 220	25	1,40	7	32,0	35,4	41,2	44,6
		B	160 - 300	40			35,8	39,2	45,0	48,4
HTP/G	5000	A	90 - 220	25	1,80	9	48,0	51,8	58,5	62,3
		B	180 - 300	40			52,2	56,0	62,7	66,5
HTG	10000	B	125 - 310	40	1,80	14	-	104,0	-	-
HTG	20000	B	125 - 310	40	5,00	29	-	230,0	-	-

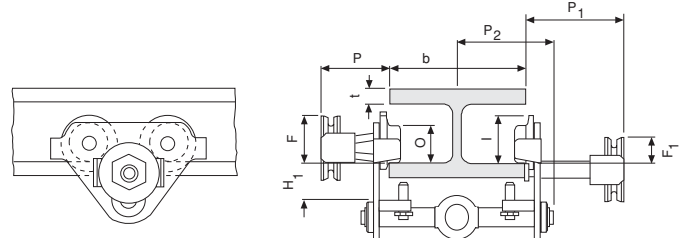
\*without hand chain

## Dimensions HTP/G in mm

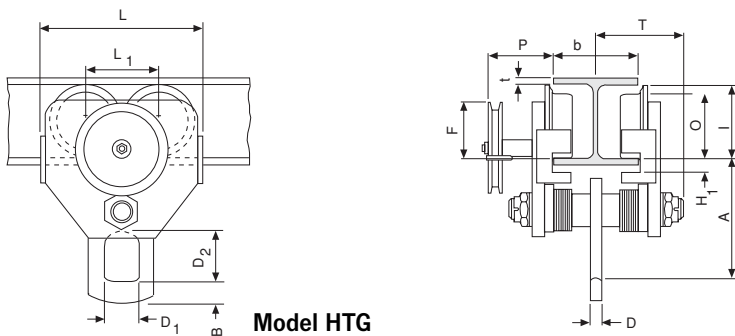
Dimension	HTP/G 500		HTP/G 1000		HTP/G 2000		HTP/G 3000		HTP/G 5000		HTG 10000	HTG 20000
	A	B	A	B	A	B	A	B	A	B	B	B
A	77,0	92,0	82,5	97,5	98,5	113,5	114,0	129,0	132,5	147,5	276,0	270,0
B	-	-	-	-	-	-	-	-	-	-	52	70
D	16	16	17	17	22	22	26	26	33	33	30	35
D <sub>1</sub>	25	25	30	30	40	40	48	48	60	60	80	110
D <sub>2</sub>	30	30	35	35	47	47	58	58	70	70	114	155
F (HTG)	91,5	91,5	91,5	91,5	90,5	90,5	107,5	107,5	149,5	149,5	113,0	113,0
F <sub>1</sub>	46,0	46,0	46,0	46,0	46,0	46,0	46,0	46,0	45,5	45,5	-	-
H <sub>1</sub>	30,5	45,5	30,5	45,5	30,5	45,5	30,0	45,0	30,0	45,0	45,0	45,0
I (HTP)	71,5	71,5	71,5	71,5	95,5	95,5	131,0	131,0	142,5	142,5	-	-
I (HTG)	76,5	76,5	76,5	76,5	98,0	98,0	132,5	132,5	148,5	148,5	170,0	170,0
L	260	260	260	260	310	310	390	390	450	450	430	870
L <sub>1</sub>	130	130	130	130	150	150	180	180	209	209	200	200
L <sub>2</sub>	-	-	-	-	-	-	-	-	-	-	-	115
O	60	60	60	60	80	80	112	112	125	125	150	150
P (HTG)	110	110	110	110	110	110	110	110	110	110	163	163
P <sub>1</sub>	168	168	168	168	168	168	168	168	168	168	-	-
P <sub>2</sub>	146,0	146,0	150,0	150,0	155,0	155,0	160,0	160,0	167,5	167,5	-	-
T	146,0	187,0	150,0	187,0	155,0	189,5	160,0	191,5	167,5	191,5	270,0	270,0



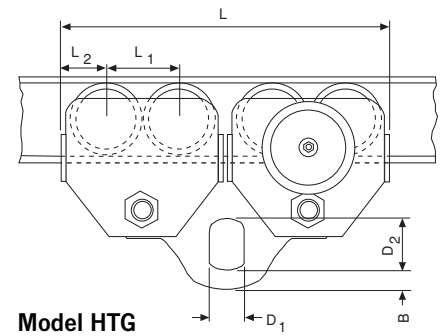
**Model HTP/G**  
500 - 5.000 kg



**Model HTP/G  
with locking device**  
500 - 5.000 kg



**Model HTG**  
10.000 kg



**Model HTG**  
20.000 kg

## Beam clamp YC



**Flattened, reinforced version for use on beams with reduced web height available on request**

### Beam clamp model YC

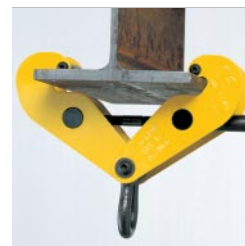
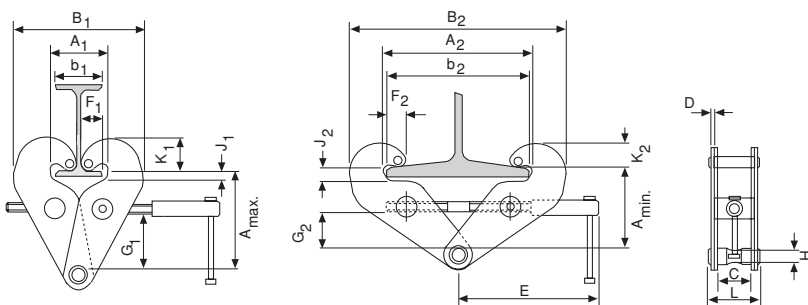
Capacities 1.000 - 10.000 kg

Provides a quick and versatile rigging point for hoisting equipment, pulley blocks or loads. Flexible application due to wide adjustment range. The central threaded spindle allows easy attachment and a safe and secure grip. The spindle can be secured against loosening.

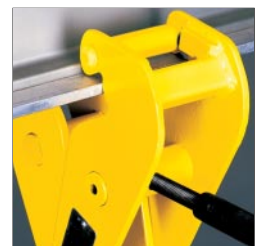
Optional: can be supplied with shackle.

Model	Capacity kg	Flange width mm	Weight kg
YC 1	1000	75 - 230	3,8
YC 2	2000	75 - 230	4,6
YC 3	3000	80 - 320	9,2
YC 5	5000	90 - 320	11,0
YC 10	10000	90 - 320	17,2

Capacity kg	A <sub>min.</sub> mm	A <sub>max.</sub> mm	A <sub>1</sub> mm	A <sub>2</sub> mm	B <sub>1</sub> mm	B <sub>2</sub> mm	b <sub>1</sub> mm	b <sub>2</sub> mm	C mm	D mm	E mm	F <sub>1</sub> mm	F <sub>2</sub> mm	G <sub>1</sub> mm	G <sub>2</sub> mm	H mm	J <sub>1</sub> mm	J <sub>2</sub> mm	K <sub>1</sub> mm	K <sub>2</sub> mm	L mm
1000	115	150	78	246	186	350	75	230	50	4	215	34	17	82	44	20	14	21	48	31	84
2000	115	150	78	246	186	350	75	230	50	6	215	35	18	82	44	20	14	21	50	32	94
3000	180	225	80	320	232	455	80	320	70	8	255	35	21	120	75	22	30	34	60	40	122
5000	180	225	90	310	242	445	90	310	70	10	255	35	21	116	75	28	30	34	60	42	129
10000	175	220	90	320	268	480	90	320	70	14	275	35	20	110	66	38	34	35	60	40	146



Clamp with shackle



Special design

## Trolley clamp CTP

### Trolley clamp model CTP

Capacities 1.000 - 3.000 kg

The easy installation to any beam makes the CTP suitable for affixing and moving hoists, pulleys and loads. It can be adjusted quickly to the beam width by turning the main spindle.

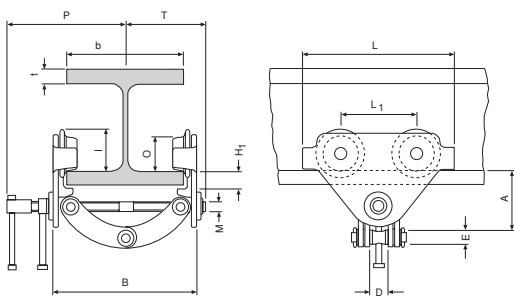
Safety is ensured by the special locking lever.

The spindle and snap-pin stops are galvanized to protect against corrosion.



Model	Capacity kg	Flange width b mm	Min. curve radius m	Weight kg
<b>CTP 1 - A</b>	1000	60 - 150	0,6	2,5
<b>CTP 2 - A</b>	2000	75 - 200	0,9	9,9
<b>CTP 2 - B</b>	2000	200 - 300	0,9	10,3
<b>CTP 3 - A</b>	3000	75 - 200	1,15	17,5
<b>CTP 3 - B</b>	3000	200 - 320	1,15	19,5

Capacity kg	Size	A mm	D mm	E mm	H <sub>1</sub> mm	I mm	L mm	L <sub>1</sub> mm	M mm	O mm	P mm	T mm	t max. mm
1000	A	82 - 109	26	22	20	53	160	75	M12	46	153	105	15
2000	A	106 - 155	42	20	30,0	71,5	260	130	M18	60	205	139	25
2000	B	136 - 191	42	20	30,0	71,5	260	130	M18	60	255	189	25
3000	A	128 - 171	50	22	30,5	95,5	310	150	M24	80	220	155	25
3000	B	150 - 212	50	22	30,5	95,5	310	150	M24	80	280	215	25



## Swivel truck trolley

### VLH



**Beam profile and dimension as well as curve radius must always be specified when ordering.**

Yale swivel truck trolley with low headroom and extremely short radius curve

#### VLHP plain trolley

Capacities 250 - 6.000 kg

#### VLHG geared trolley

Capacities 250 - 6.000 kg

The manual trolley series VLH features extremely low headroom. The swivel truck construction allows negotiation of very short radius curves.

#### Workmanship and features

- All-steel construction with low headroom.
- The swivel truck feature permits application on runways with very short radius curves.
- All units are variably adjustable to individual beam sizes.
- Anti-drop devices and anti-tilt devices are standard features.

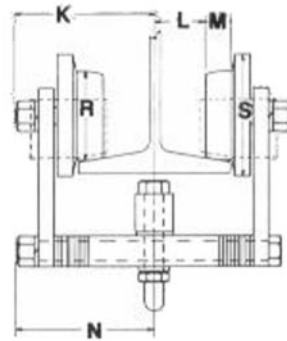
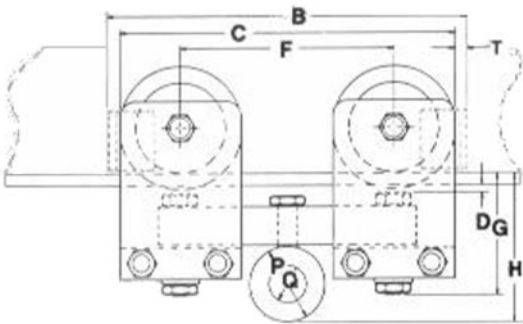
#### Optional equipment

- Rubber buffers available on request.
- Large variety of special versions on request.

Model	Capacity kg	Beam flange width min. mm	Flange width max. gerader Träger mm	Max. flange thickness mm	Min. radius curve mm	Net weight	
						VLHP kg	VLHG kg
VLHP/G 0,25	250	67	117	16	251	20	29
VLHP/G 0,5	500	67	117	16	251	20	29
VLHP/G 1	1000	76	117	16	251	27	35
VLHP/G 1,5	1500	86	140	16	495	38	48
VLHP/G 2	2000	86	140	16	495	38	48
VLHP/G 3	3000	102	178	16	391	71	85
VLHP/G 4	4000	102	178	16	391	71	85
VLHP/G 5	5000	117	203	22	860	125	140
VLHP/G 6	6000	117	203	22	860	125	140

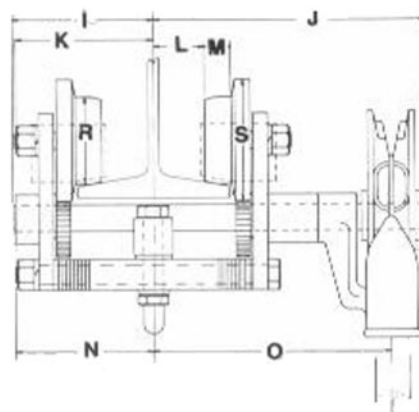
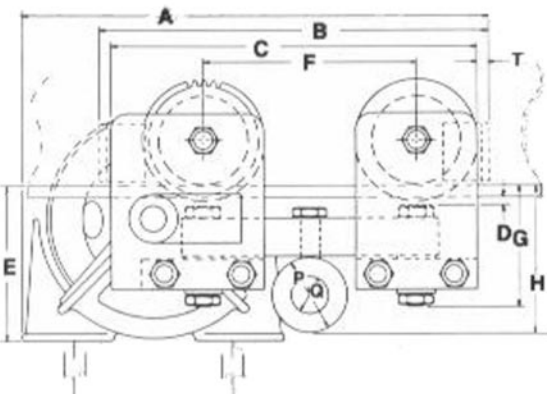
**Dimensions plain trolley VLHP**

Capacity in kg	A mm	B mm	C mm	D mm	E mm	F mm	G mm	H mm	I mm	J mm	K mm	L mm	M mm	N mm	O mm	P mm	Q mm	R mm	S mm	T mm
250	-	298	279	8	-	178	103	124	-	-	114	41	22	110	-	64	32	73	92	10
500	-	298	279	8	-	178	103	124	-	-	114	41	22	110	-	64	32	73	92	10
1000	-	330	305	8	-	178	111	130	-	-	121	32	28	111	-	64	32	95	127	25
1500	-	413	362	6	-	210	114	140	-	-	127	44	29	127	-	76	38	114	152	25
2000	-	413	362	6	-	210	114	140	-	-	127	44	29	127	-	76	38	114	152	25
3000	-	476	445	6	-	241	165	204	-	-	152	52	34	152	-	95	51	162	203	29
4000	-	476	445	6	-	241	165	204	-	-	152	52	34	152	-	95	51	162	203	29
5000	-	565	527	5	-	298	194	264	-	-	194	68	48	191	-	140	76	183	229	64
6000	-	565	527	5	-	298	194	264	-	-	194	68	48	191	-	140	76	183	229	64



**Dimensions geared trolley VLHG**

Capacity in kg	A mm	B mm	C mm	D mm	E mm	F mm	G mm	H mm	I mm	J mm	K mm	L mm	M mm	N mm	O mm	P mm	Q mm	R mm	S mm	T mm
250	391	324	305	6	130	178	103	124	113	232	114	40	22	110	200	64	32	73	102	10
500	391	324	305	6	130	178	103	124	113	232	114	40	22	110	200	64	32	73	102	10
1000	402	343	316	8	135	178	111	130	113	232	121	32	28	111	200	64	32	95	127	25
1500	451	413	362	6	135	210	114	140	122	222	127	44	28	127	200	76	38	114	152	25
2000	451	413	362	6	135	210	114	140	122	222	127	44	28	127	200	76	38	114	152	25
3000	527	476	445	6	168	241	165	204	149	248	152	52	29	152	216	95	51	162	203	29
4000	527	476	445	6	168	241	165	204	149	248	152	52	29	152	216	95	51	162	203	29
5000	649	565	527	6	214	298	194	264	173	287	194	68	37	191	254	140	76	183	229	64
6000	649	565	527	6	214	298	194	264	173	287	194	68	37	191	254	140	76	183	229	64



## Electric trolley VTE-U



**Yale hoists and trolleys are not designed for passenger elevation applications and must not be used for this purpose!**

### Electric trolley model VTE-U

Capacities 1.000 - 5.000 kg

Specially recommended for loads over 1.000 kg, for transporting over long distances and/or when used frequently. Suitable for almost all hoists with suspension hook due to universal shackle connection. Travel motor with worm gear transmission ensures smooth start and self braking - a separate motor brake is not required. Compact, robust frame with low overall height.

Motors protected to IP 55, operating voltage 400 V / 50 Hz / 3-phase. Single speed motors can be switched to 230 V.

#### Features

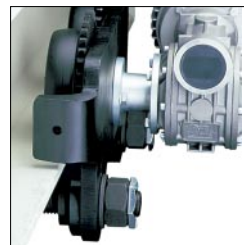
- Wheels manufactured from fracture-proof steel. Smooth running due to machined surfaces and ball bearing mounting. Cambered profile suitable for parallel and inclined beam profiles.
- Wheel fracture supports (according to DIN 15018 and machinery directives) and anti-tilt devices are fitted as standard.
- Easily adjusted to fit to a wide range of beam widths and profiles due to threaded spindles.

#### Optional

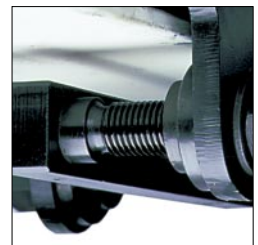
- Low voltage control (42 V) available.
- All trolleys can be fitted with rubber buffers.



**Wheel with cambered profile**



**Wheel fracture supports with option to fit buffers**



**Threaded spindle**

## Technical data

Model	Capacity	Travel speed	Motor	Beam flange	Flange thickness	Min.	Net weight
	kg	m/min	kW	width mm	t max. mm	curve radius m	
VTE 1-A-18/U*	1000	18 or 18/4,5	0,18 or 0,18/0,06	58 - 180	19	0,90	19,5
VTE 1-B-18/U*	1000	18 or 18/4,5	0,18 or 0,18/0,06	180 - 300	19	0,90	25,2
VTE 2-A-18/U*	2000	18 or 18/4,5	0,18 or 0,18/0,06	58 - 180	19	1,15	26,0
VTE 2-B-18/U*	2000	18 or 18/4,5	0,18 or 0,18/0,06	180 - 300	19	1,15	30,2
VTE 3-A-11/U	3000	11 or 11/2,8	0,37 or 0,3/0,09	74 - 180	27	1,40	51,0
VTE 3-B-11/U	3000	11 or 11/2,8	0,37 or 0,3/0,09	180 - 300	27	1,40	53,0
VTE 5-A-11/U	5000	11 or 11/2,8	0,37 or 0,3/0,09	98 - 180	27	1,80	77,0
VTE 5-B-11/U	5000	11 or 11/2,8	0,37 or 0,3/0,09	180 - 300	27	1,80	80,0

\*11 or 11/2,8 m/min travel speed on request

## Dimensions in mm

Dimension	VTE 1-A-18/U	VTE 1-B-18/U	VTE 2-A-18/U	VTE 2-B-18/U	VTE 3-A-11/U	VTE 3-B-11/U	VTE 5-A-11/U	VTE 5-B-11/U
A	113	113	115	115	139	139	161	161
B	b + 50	b + 50	b + 54	b + 54	b + 60	b + 60	b + 70	b + 70
C	49	49	47	47	57	57	60	60
D	16	16	16	16	19	19	22	22
E	187	187	187	187	202	202	202	202
F	97	97	97	97	97	97	97	97
G	43	43	43	43	51	51	58	58
H	129	129	128	128	144	144	178	178
I	77	77	98	98	133	133	149	149
L1	130	130	150	150	180	180	209	209
M	155	155	180	180	208	208	263	263
N 1G	255	255	255	255	292	292	292	292
N 2G	263	263	263	263	296	296	296	296
O	60	60	80	80	112	112	125	125
P	125	125	110	110	126	126	118	118
Q	145	205	153	213	160	220	182	242

